

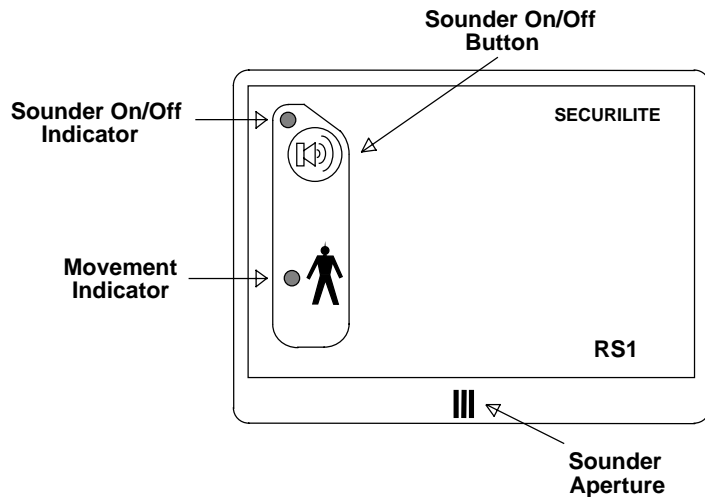
## Installation Instructions

# 1805 RS1 Remote Sounder

Thankyou for purchasing the RS1 Remote Sounder. Please read these instructions carefully before starting the installation.

### FEATURES

- Audible & Visual indication of detection by a PIR sensor for one zone of lighting.
- Internal sounder bleeps whenever movement is detected.
- Touch sensitive buttons.
- 12V dc 3-wire connection.
- Multiple RS1 Remote Sounders' can be connected together 24 hour operation.

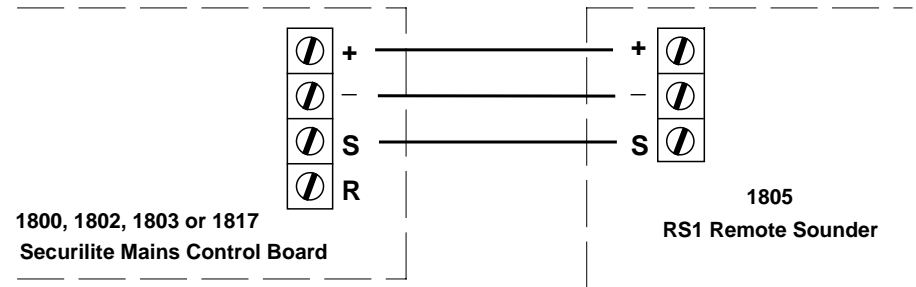


### SITING THE UNIT

The unit may be installed at any suitable indoor location where the device will not be subject to excessive heat or moisture.

### INSTALLATION

1. Pull the lid off the back part of the enclosure using your fingers.
2. Fix the back part of the enclosure to the chosen surface.
3. Run a 4 core alarm cable from the Securilite mains control unit to the RS1 Remote Sounder and connect as shown over.



4. Push the front enclosure back into position carefully.
5. Connect any other devices to the system following the instructions supplied with the individual units.

### UNIT OPERATION

**Sounder On/Off Button** - This will either arm or disarm the internal sounder. With the sounder on, it will activate whenever movement is sensed by a PIR detector, day or night.

**Sounder On/Off Indicator** - While this is illuminated, the sounder is ready to activate whenever a PIR detector senses movement. With the indicator off, the sounder is also off.

### SPECIFICATION

Operating voltage	12V dc
Current consumption	20mA
Operating temperature	5°C to +40°C
Weatherproofing	IP30 (Indoor use only)
Dimensions	85mm(W) x 65mm(H) x 20mm(D)
Package weight	0.07Kg
Approvals	CE directive 93/68/EEC EMC directive 89/336/EEC, BS EN 50081-1 : 1992, BS EN 50082-1 : 1992



**VOLTEK**  
AUTOMATION LTD  
39c Churchill Way, Lomeshaye Ind. Est., Nelson. Lancs. BB9 6RT (UK)  
Tel (01282) 695500 Fax (01282) 695511 International Code (+ 44 1282)  
Email : Sales@voltek.co.uk Website : www.voltek.co.uk