

# INSTALLATION & USER INSTRUCTIONS

## SP1 Spectrum Remote Control

### FEATURES

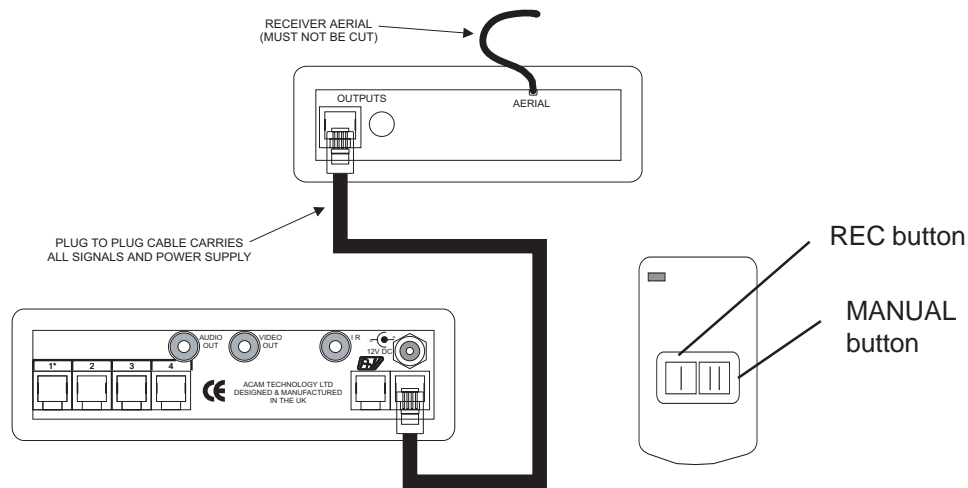
- Allows a Voltek Spectrum Four Way or Eight way switcher to be controlled from other locations in the property.
- Ideal if the camera pictures are distributed to other TV sets, or if the VCR is in a hidden location.

### PACKAGE CONTENTS

- Two button transmitter
- Receiver
- Connecting Lead
- Fixing Kit containing two screws, four rubber feet

### INSTALLATION

N.B. Do not enclose the receiver in or near a metal container and do not shorten the aerial lead as this will affect the operation.



# INSTALLATION & USER INSTRUCTIONS

## SP1 Spectrum Remote Control

### FEATURES

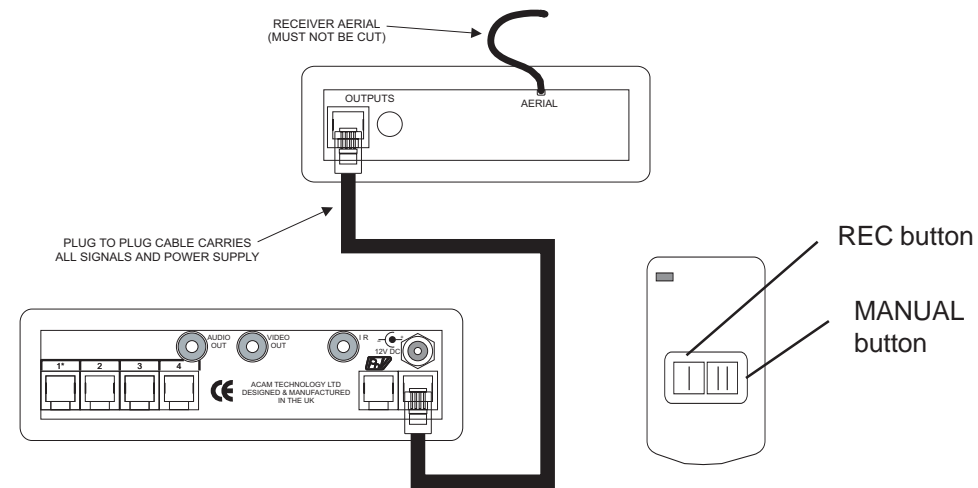
- Allows a Voltek Spectrum Four Way or Eight way switcher to be controlled from other locations in the property.
- Ideal if the camera pictures are distributed to other TV sets, or if the VCR is in a hidden location.

### PACKAGE CONTENTS

- Two button transmitter
- Receiver
- Connecting Lead
- Fixing Kit containing two screws, four rubber feet

### INSTALLATION

N.B. Do not enclose the receiver in or near a metal container and do not shorten the aerial lead as this will affect the operation.



Churchill Way, Lomeshaye Ind Est, Nelson Lancs. BB9 6RT  
Tel 01282 695 500 Fax 01282 695 511  
Email : info@voltek.co.uk Website : www.voltek.co.uk

We reserve the right to make changes to any product or specification without notice.  
(c) 2000 Voltek Automation Ltd. SP1instructions : Issue 1



Churchill Way, Lomeshaye Ind Est, Nelson Lancs. BB9 6RT  
Tel 08707 454 971 Fax 08707 454 972  
Email : info@voltek.co.uk Website : www.voltek.co.uk

We reserve the right to make changes to any product or specification without notice.  
(c) 2000 Voltek Automation Ltd. SP1instructions : Issue 1